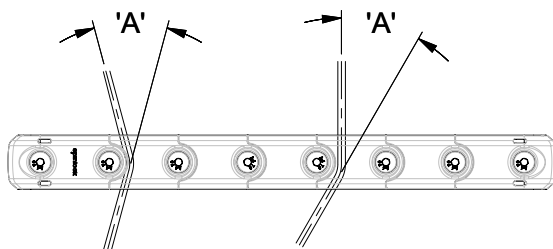


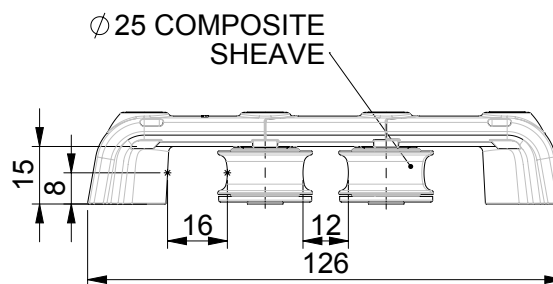
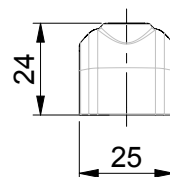
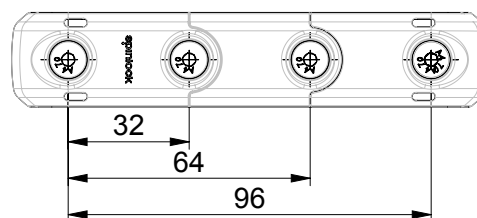
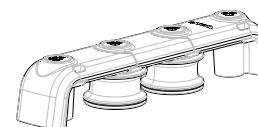
DEFLECTION
ANGLE



BISECTED
ROPE ENTRY

STRAIGHT
ROPE ENTRY

Rope Deflection Angle (°)	Max Rope Tension (kg)
10	2290
15	1530
30	770
45	520
60	400
90	280



spinlock
BE ADVENTURE-PROOF



WARNING:
IF USING AS A DRILL TEMPLATE, ENSURE PRINTER SETTINGS ARE
ADJUSTED TO ACCOUNT FOR THE DRAWING SCALE AND **ALWAYS**
CHECK DIMENSIONS BEFORE DRILLING.



COPYRIGHT:
THIS DRAWING IS PROTECTED BY COPYRIGHT. ANY USE IS
FORBIDDEN WITHOUT THE WRITTEN CONSENT OF SPINLOCK.

ALL DIMENSIONS IN MM

SCALE	PAGE SIZE	DATE
1:2	A4	APR 2018

FASTENERS
M5 CSK
x 4

MAX LINE SIZE
10mm

WEIGHT
67g

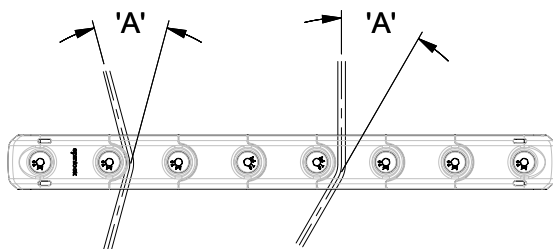
SWL PER SHEAVE
400kg

SWL PER UNIT
800kg

T25-2

FOR MORE INFO CONTACT
SPT@SPINLOCK.CO.UK

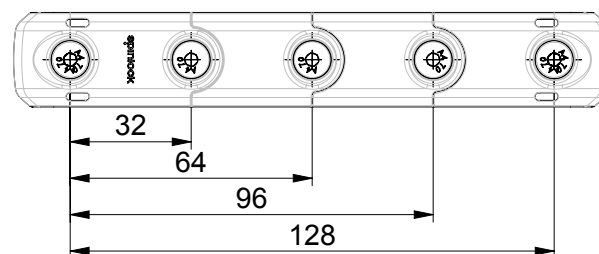
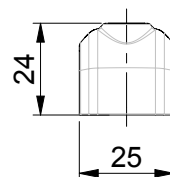
DEFLECTION
ANGLE



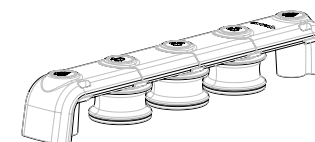
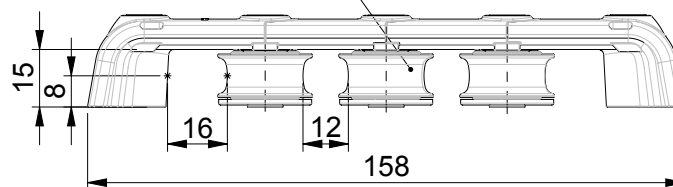
BISECTED
ROPE ENTRY

STRAIGHT
ROPE ENTRY

Rope Deflection Angle (°)	Max Rope Tension (kg)
10	2290
15	1530
30	770
45	520
60	400
90	280



Ø 25 COMPOSITE
SHEAVE



spinlock
BE ADVENTURE-PROOF



WARNING:
IF USING AS A DRILL TEMPLATE, ENSURE PRINTER SETTINGS ARE
ADJUSTED TO ACCOUNT FOR THE DRAWING SCALE AND **ALWAYS**
CHECK DIMENSIONS BEFORE DRILLING.



COPYRIGHT:
THIS DRAWING IS PROTECTED BY COPYRIGHT. ANY USE IS
FORBIDDEN WITHOUT THE WRITTEN CONSENT OF SPINLOCK.

ALL DIMENSIONS IN MM

SCALE 1:2
PAGE SIZE A4
DATE APR 2018

FASTENERS

M5 CSK
x 5

MAX LINE SIZE

10mm

WEIGHT

86g

SWL PER SHEAVE

400kg

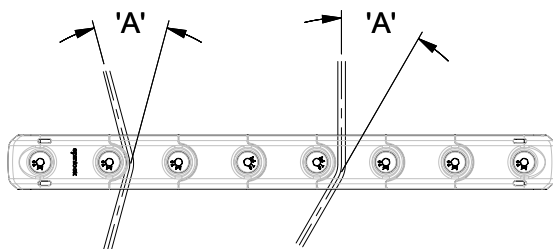
SWL PER UNIT

1000kg

T25-3

FOR MORE INFO CONTACT
SPT@SPINLOCK.CO.UK

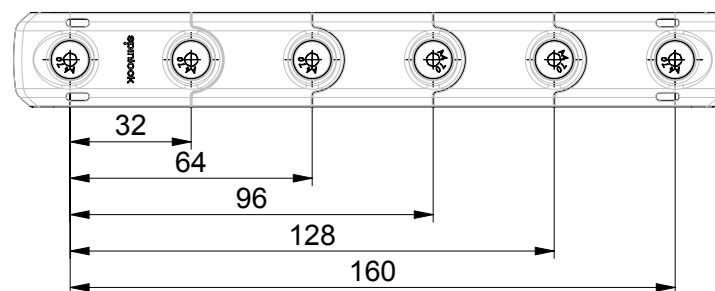
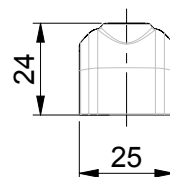
DEFLECTION
ANGLE



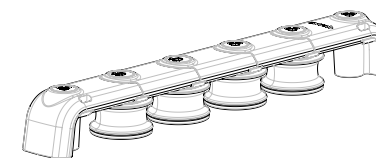
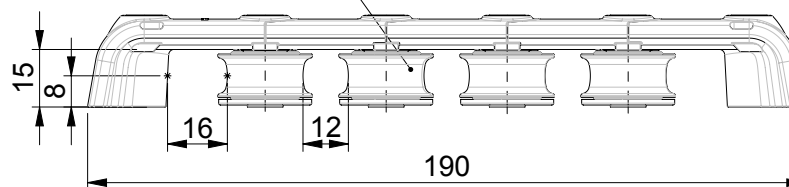
BISECTED
ROPE ENTRY

STRAIGHT
ROPE ENTRY

Rope Deflection Angle (°)	Max Rope Tension (kg)
10	2290
15	1530
30	770
45	520
60	400
90	280



Ø 25 COMPOSITE
SHEAVE



spinlock
BE ADVENTURE-PROOF



WARNING:
IF USING AS A DRILL TEMPLATE, ENSURE PRINTER SETTINGS ARE
ADJUSTED TO ACCOUNT FOR THE DRAWING SCALE AND **ALWAYS**
CHECK DIMENSIONS BEFORE DRILLING.



COPYRIGHT:
THIS DRAWING IS PROTECTED BY COPYRIGHT. ANY USE IS
FORBIDDEN WITHOUT THE WRITTEN CONSENT OF SPINLOCK.

ALL DIMENSIONS IN MM

SCALE
1:2

PAGE SIZE
A4

DATE
APR 2018

FASTENERS
**M5 CSK
x 6**

MAX LINE SIZE
10mm

WEIGHT
106g

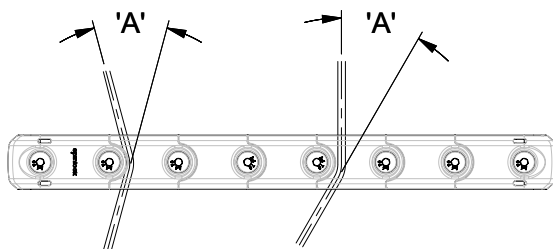
SWL PER SHEAVE
400kg

SWL PER UNIT
1200kg

T25-4

FOR MORE INFO CONTACT
SPT@SPINLOCK.CO.UK

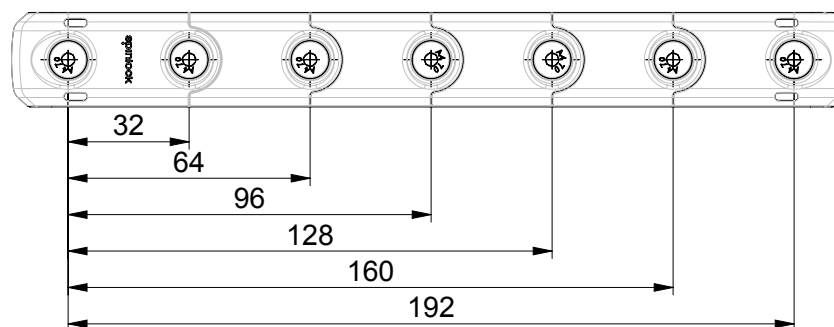
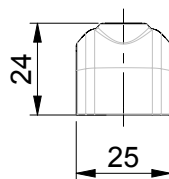
DEFLECTION
ANGLE



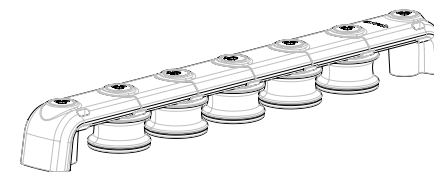
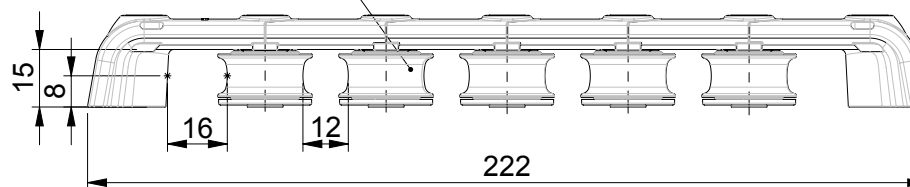
BISECTED
ROPE ENTRY

STRAIGHT
ROPE ENTRY

Rope Deflection Angle (°)	Max Rope Tension (kg)
10	2290
15	1530
30	770
45	520
60	400
90	280



Ø 25 COMPOSITE
SHEAVE



spinlock
BE ADVENTURE-PROOF



WARNING:
IF USING AS A DRILL TEMPLATE, ENSURE PRINTER SETTINGS ARE
ADJUSTED TO ACCOUNT FOR THE DRAWING SCALE AND **ALWAYS**
CHECK DIMENSIONS BEFORE DRILLING.



COPYRIGHT:
THIS DRAWING IS PROTECTED BY COPYRIGHT. ANY USE IS
FORBIDDEN WITHOUT THE WRITTEN CONSENT OF SPINLOCK.

ALL DIMENSIONS IN MM

SCALE	PAGE SIZE	DATE
1:2	A4	APR 2018

FASTENERS

M5 CSK
x 7

MAX LINE SIZE

10mm

WEIGHT

126g

SWL PER SHEAVE

400kg

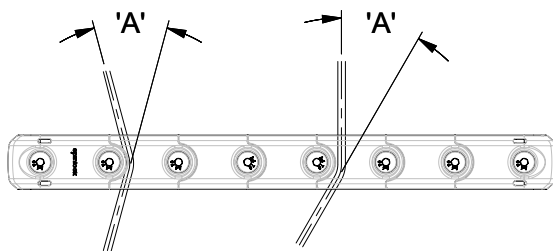
SWL PER UNIT

1400kg

T25-5

FOR MORE INFO CONTACT
SPT@SPINLOCK.CO.UK

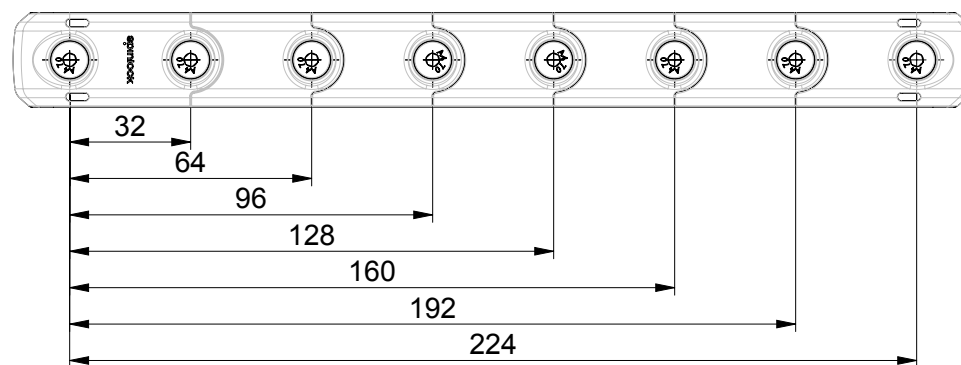
DEFLECTION
ANGLE



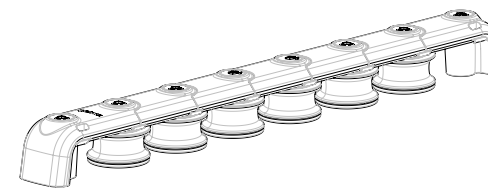
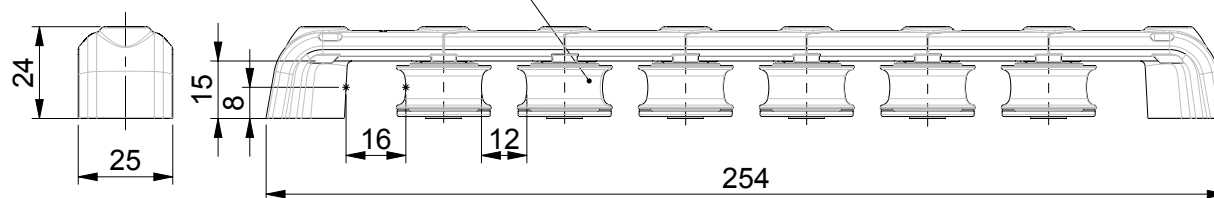
BISECTED
ROPE ENTRY

STRAIGHT
ROPE ENTRY

Rope Deflection Angle (°)	Max Rope Tension (kg)
10	2290
15	1530
30	770
45	520
60	400
90	280



Ø 25 COMPOSITE
SHEAVE



spinlock
BE ADVENTURE-PROOF



WARNING:
IF USING AS A DRILL TEMPLATE, ENSURE PRINTER SETTINGS ARE
ADJUSTED TO ACCOUNT FOR THE DRAWING SCALE AND **ALWAYS**
CHECK DIMENSIONS BEFORE DRILLING.



COPYRIGHT:
THIS DRAWING IS PROTECTED BY COPYRIGHT. ANY USE IS
FORBIDDEN WITHOUT THE WRITTEN CONSENT OF SPINLOCK.

ALL DIMENSIONS IN MM

SCALE
1:2

PAGE SIZE
A4

DATE
APR 2018

FASTENERS
**M5 CSK
x 8**

MAX LINE SIZE
10mm

WEIGHT
160g

SWL PER SHEAVE
400kg

SWL PER UNIT
1600kg

T25/6

FOR MORE INFO CONTACT
SPT@SPINLOCK.CO.UK